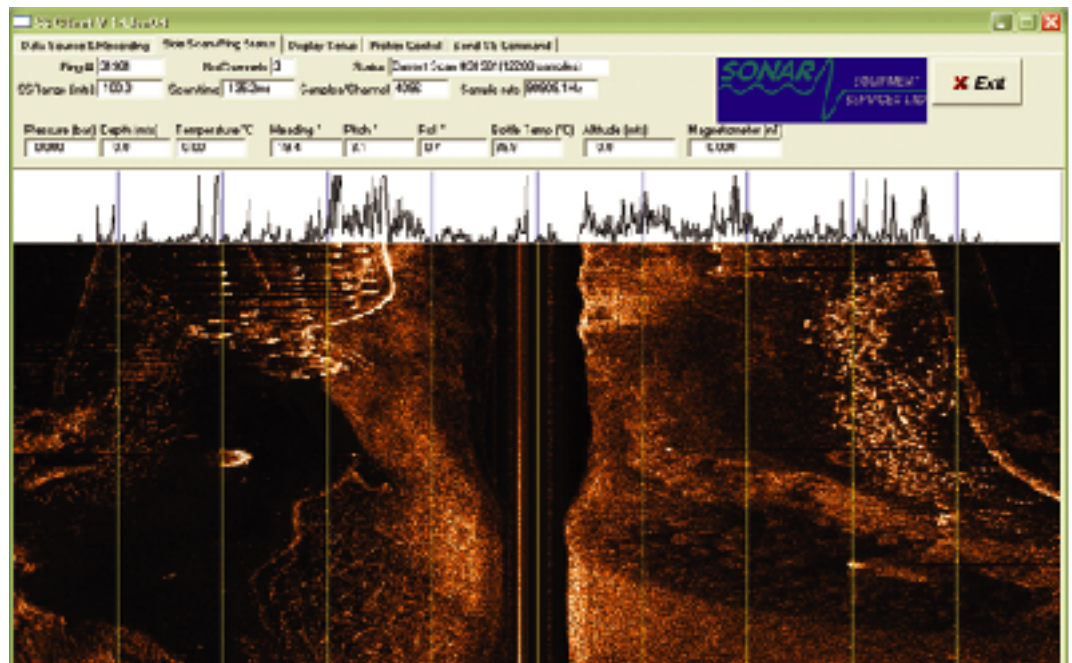


## INTRODUCTION

Sonar Equipment Services Ltd based on their experience over many years in providing sonar systems have introduced a one system solution for use on ROV, AUV and towed systems. Central to the system is the new SES multilink which provides high speed digital interfacing to their Probe SS2002 high resolution sidescan and the field proven Probe 5002 Sub bottom Profiler. In addition all interfaces are provided for magnetometer, pitch roll and heading sensor responder and a new high resolution depth sensor. Digital data from all sensors can be sent via a single fibre multimode or single mode or coax cable in the case of towed systems plus stored to disc in the multilink for AUV applications. Bi-directional RS232 control enables sensors to be controlled remotely.

The modular system design together with flexible digital architecture enables the operator to transfer modules from a towed system to ROV or AUV which means equipment stock holding can be kept to a minimum. Project engineers will appreciate the flexibility when assessing project requirements and interfacing to various survey platforms. Power supply options and media options are there to assist in meeting virtually all scenarios. The availability of additional high speed serial links will be advantageous where there are a limited number of fibres available on an ROV.



The hardware and software design will allow new and existing sensors to be added in the future and ensures the long term viability of the system offering reduced operating costs over time. Care has also been taken to ensure compatibility with software processing suites such as Coda etc.

Central to the development of the system has been the requirement for quality data at a sensible cost and through careful design this has been achieved.

Systems will be offered for rental in 2004 with assured spares back up from our Great Yarmouth base.